



Meet Sense

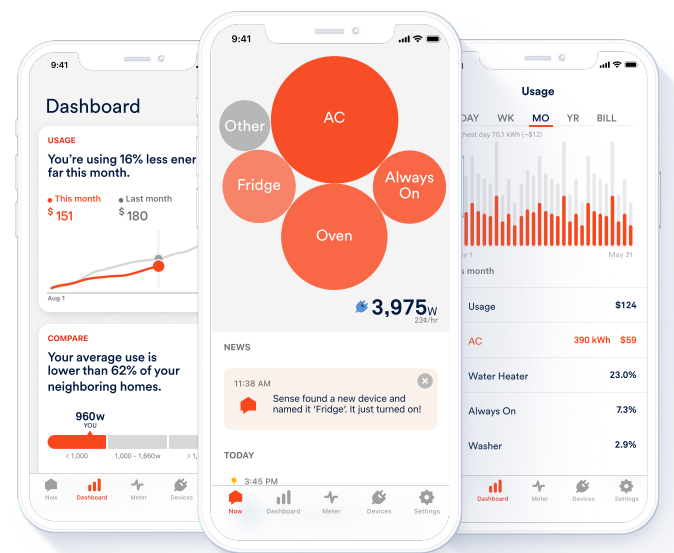
Company

Sense's mission is to reduce global carbon emissions by transforming the relationship between people, homes and the grid.

Established in 2013 and headquartered in Cambridge, MA, Sense is leading the way in ClimateTech innovation. Initially a groundbreaking direct-to-consumer Home Energy Monitor reaching over 100K homes in the US, Sense is now expanding by embedding its technology into smart meters that provide electricity providers with software that enhances grid management and customer engagement.

Led by pioneers in machine learning, who played a pivotal role in bringing voice recognition technology to mobile phones, our founding team brings decades of expertise to tackle climate change and achieve Sense's mission to transform the relationship between people, homes, and the grid.

To learn more, visit sense.com



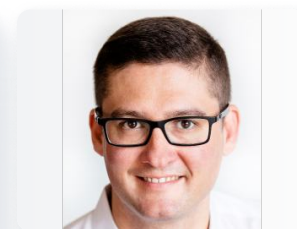
Founded

2013 in Cambridge, MA

Founders



Mike Phillips
Co-Founder, CEO



Chris Micali
Co-Founder, VP R&D and Hardware



Ryan Houlette
Co-Founder & VP Engineering

Sense News

For the latest Sense news, visit our press page at <https://sense.com/press/>

Press contact: press@sense.com

